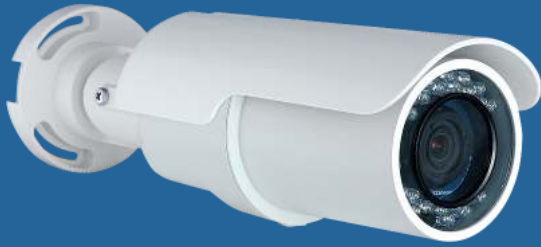




High Definition Outdoor Bullet Camera

model CV136



A complete, **Cloud-based** intelligent video surveillance system with **full HD resolution**.
Nothing else required.

Reliable protection has never been this simple.

The CheckVideo HD Outdoor Bullet Camera (CV136) is a self-contained, Cloud-based intelligent video surveillance system with built-in advanced video analytics and recording. A 2 megapixel, IP 66 weatherproof-rated IR camera, the CV136 includes an all-in-one power cable with the option for Power over Ethernet. It works with the CheckVideo Cloud VMS™ to provide all video security system management. Once installed on site, it is configured and set up remotely using the Cloud VMS™, keeping maintenance costs low.

CAMERA



ADVANCED VIDEO ANALYTICS

The camera becomes a video sensor, detecting persons and vehicles, dramatically reducing false alarms by up to 85% versus outdoor PIRs or cameras with built-in motion detection¹.



BUILT-IN DVR

Continuously records to internal micro-SDHC card, eliminating the need for a separate external NVR or DVR.



SECURE VIDEO STREAMING

Allows simultaneous viewing of live video on multiple unlimited Web clients.



OUTDOOR RATED

Includes an IP 66 weatherproof housing with onboard heater, built-in IR illumination and an all-in-one power cable that enables Power over Ethernet.

VIDEO MANAGEMENT

CLOUD VMS™

All CheckVideo solutions feature 100% Cloud-based video management functionality with greatly simplified on-site installation.

VIDEO ALERTS

Pushes notifications of alerts based on analytics detections to central monitoring station, email addresses or smartphones.

SECURE OFFSITE BACKUP

For proper redundancy, stores alert video clips at a completely secure offsite location, for user-determined backup timeframes (7 days included).

VIDEO SEARCH ENGINE

Intelligent video search saves time by drilling down to the specific hours or days of interest in seconds rather than hours.

AUTOMATED SYSTEM HEALTH MONITORING

The system issues proactive alerts in case of camera tampering, poor video quality or loss of communication.



High Definition Outdoor Bullet Camera

model CV136

CAMERA

Image Sensor	1/2.7" Progressive Scan CMOS
Lens	3mm-9mm varifocal / F 1.2
Light Sensitivity	Color: 0.2 lux; B/W IR: 0 lux For zero light scenes, use an external IR illuminator for analytics detection distances over 60 feet
Image Processing	Auto White Balance, Auto Exposure; 3D Noise Reduction; Wide Dynamic Range

VIDEO

Video Compression	H.264
Resolutions	1080p (1920x1080); WCIF (432x240)
Video Streaming	Live HTTP streaming compatible with Adobe® Flash® Player; iPhone®, Android™ compatible

NETWORK

Wired	10/100Mbps Ethernet (RJ-45)
Security	HTTPS, IP Filter, IEEE 802.1X
Protocols	IPv4/v6, TCP/IP, UDP, HTTP, HTTPS, ICMP, DHCP, UPnP

DVR

Resolutions	1080p (1920x1080); WCIF (432x240)
Recording	Internal 32GB, up to 30 days of continuous recording at WCIF
Web Player	HTTP streaming compatible with Adobe Flash Player

GENERAL

Dimensions	84 X 180 mm (3.3 X 7.1 inches) With sunshield: 84 X 193 mm (3.3 X 7.6 inches)
Connectors	Ethernet: RJ45
Operating Conditions	-10°C to 50°C (14°F to 122° F) With heater, requires external DC12V/AC24V: -35°C - 50°C (-31°F - 122°F) Humidity: 10% to 90%, no condensation IP 66 weatherproof rating
Power Source	DC12V, AC24V or PoE
Power Consumption	5W; 0.5A With built-in IR illuminator: +3W; +0.3A With heater: +12W; +1.0A
Weight	2.2 lbs
Approvals	CE, FCC, RoHS

VIDEO MANAGEMENT

Hosted Software	CheckVideo Cloud VMS enables online live, recorded and search functionality as well as configuration and management of an unlimited number of cameras across multiple sites
Central Station Automation Software Integration	Bold Manitou, Micro Key MKMS, SIMS II/III, SureView Immix®, API available for integration to PSIMs

ALARM EVENTS (ANALYTICS)

Analytics Setup	Calibration-free, auto-adapting analytics Detects people, up to 140 feet Detects vehicles, up to 400 feet Detects moving objects (eliminates environmental motion) Unlimited polygonal detection zones for person, vehicle, motion Duration of time for detection of loitering person or stopped vehicle
Video Alarm Clip	10-second video clip generated upon trigger of alarm; contains 2-4 seconds of pre-alarm video
Alarm Triggers	Presence of person, vehicle, or motion Poor video Loss of communication

PERSON DETECTION RANGES*

Zoom	Detection Range: Far	Detection Range: Near	Horizontal Field of View
3mm	50 feet	15 feet	88°
5mm	80 feet	20 feet	60°
7mm	110 feet	25 feet	45°
9mm	140 feet	30 feet	36°

VEHICLE DETECTION RANGES**

Zoom	Detection Range: Far	Detection Range: Near	Horizontal Field of View
3mm	150 feet	40 feet	88°
5mm	230 feet	60 feet	60°
7mm	310 feet	80 feet	45°
9mm	400 feet	100 feet	36°

*6-ft person walking at 4 mph across field of view. The detection width at the near end of the range will be approximately 20 feet, and the detection width at the far end of the range will be approximately 90 feet.

**Vehicle (SUV-sized) moving across field of view at 15 mph close range, and 50 mph far range. The detection width at the near end of the range will be approximately 60 feet, and the detection width at the far end of the range will be approximately 250 feet.

†Results based on CheckVideo customer data.

